

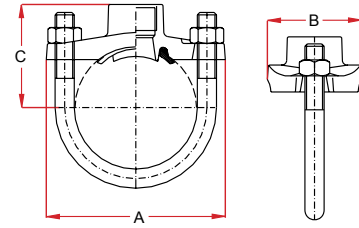
# BRANCH OUTLETS / Style 99

## QUIK-T™ BRANCH OUTLETS

Maximum working pressure: 300 psi  
For fire protection equipment and approved pressure ratings please contact Modgal.

## STYLE 99 QUIKLET™

Sprinkler Fitting



| Nominal Size<br>(Inches / DN) |         | Pipe<br>Outside<br>Diameter | Outlet<br>Type | Quik-T™ Dimensions |      |      | Hole<br>Diameter<br>Tolerance<br>+1/16" | U-Bolt      |      |        | Weight<br>Lbs | Approvals     |
|-------------------------------|---------|-----------------------------|----------------|--------------------|------|------|---|-------------|------|--------|---------------|---------------|
| Run                           | Outlet  |                             |                | A                  | B    | C    |   | Nut<br>Qty. | Size | Length |               |               |
| 1¼" / 32                      | ¾" / 10 | 1,660                       | BSP            | 3.58               | 2.28 | 1.69 | 1 <sup>3</sup> / <sub>16</sub> "        | 2           | ¾"   | 2½"    | 0.80          | -             |
|                               | ½" / 15 | 1,660                       | BSP / NPT      | 3.58               | 2.28 | 1.69 | 1 <sup>3</sup> / <sub>16</sub> "        | 2           | ¾"   | 2½"    | 0.80          | FM / UL / VDS |
|                               | ¾" / 20 | 1,660                       | BSP / NPT      | 3.58               | 2.28 | 1.97 | 1 <sup>3</sup> / <sub>16</sub> "        | 2           | ¾"   | 2½"    | 0.90          | FM / UL / VDS |
|                               | 1" / 25 | 1,660                       | BSP / NPT      | 3.58               | 2.28 | 2.20 | 1 <sup>3</sup> / <sub>16</sub> "        | 2           | ¾"   | 2½"    | 0.96          | FM / VDS      |
| 1½" / 40                      | ¾" / 10 | 1,900                       | BSP            | 3.58               | 2.28 | 1.74 | 1 <sup>3</sup> / <sub>16</sub> "        | 2           | ¾"   | 2½"    | 0.79          | -             |
|                               | ½" / 15 | 1,900                       | BSP / NPT      | 3.58               | 2.28 | 1.74 | 1 <sup>3</sup> / <sub>16</sub> "        | 2           | ¾"   | 2½"    | 0.79          | FM / UL / VDS |
|                               | ¾" / 20 | 1,900                       | BSP / NPT      | 3.58               | 2.28 | 2.01 | 1 <sup>3</sup> / <sub>16</sub> "        | 2           | ¾"   | 2½"    | 0.83          | FM / UL / VDS |
|                               | 1" / 25 | 1,900                       | BSP / NPT      | 3.58               | 2.28 | 2.26 | 1 <sup>3</sup> / <sub>16</sub> "        | 2           | ¾"   | 2½"    | 0.93          | FM / VDS      |
| 2" / 50                       | ¾" / 10 | 2,375                       | BSP            | 3.80               | 2.28 | 1.97 | 1 <sup>3</sup> / <sub>16</sub> "        | 2           | ¾"   | 3¼"    | 0.84          | -             |
|                               | ½" / 15 | 2,375                       | BSP / NPT      | 3.80               | 2.28 | 1.97 | 1 <sup>3</sup> / <sub>16</sub> "        | 2           | ¾"   | 3¼"    | 0.84          | FM / UL / VDS |
|                               | ¾" / 20 | 2,375                       | BSP / NPT      | 3.80               | 2.28 | 2.26 | 1 <sup>3</sup> / <sub>16</sub> "        | 2           | ¾"   | 3¼"    | 0.88          | FM / UL / VDS |
|                               | 1" / 25 | 2,375                       | BSP / NPT      | 3.80               | 2.28 | 2.50 | 1 <sup>3</sup> / <sub>16</sub> "        | 2           | ¾"   | 3¼"    | 0.98          | FM / UL / VDS |
| 2½" / 65                      | ½" / 15 | 2,875                       | BSP / NPT      | 4.41               | 2.24 | 2.50 | 1 <sup>3</sup> / <sub>16</sub> "        | 2           | ½"   | 4½"    | 1.46          | FM / UL*      |
|                               | ¾" / 20 | 2,875                       | BSP / NPT      | 4.41               | 2.24 | 2.54 | 1 <sup>3</sup> / <sub>16</sub> "        | 2           | ½"   | 4½"    | 1.46          | FM / UL*      |
|                               | 1" / 25 | 2,875                       | BSP / NPT      | 4.41               | 2.24 | 2.85 | 1 <sup>3</sup> / <sub>16</sub> "        | 2           | ½"   | 4½"    | 1.59          | FM / UL*      |
| 3" OD                         | ½" / 15 | 3,000                       | BSP            | 4.41               | 2.24 | 2.50 | 1 <sup>3</sup> / <sub>16</sub> "        | 2           | ½"   | 4½"    | 1.32          | FM / UL / VDS |
|                               | ¾" / 20 | 3,000                       | BSP            | 4.41               | 2.24 | 2.54 | 1 <sup>3</sup> / <sub>16</sub> "        | 2           | ½"   | 4½"    | 1.32          | FM / UL / VDS |
|                               | 1" / 25 | 3,000                       | BSP            | 4.41               | 2.24 | 2.85 | 1 <sup>3</sup> / <sub>16</sub> "        | 2           | ½"   | 4½"    | 1.41          | FM / UL / VDS |