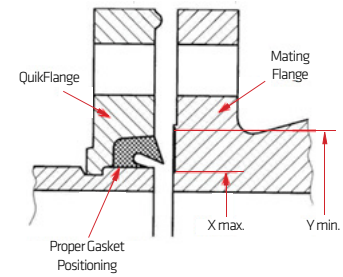
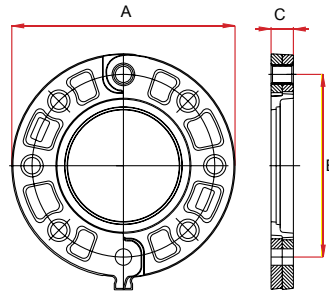


# QUIKFLANGE™ / Style 90



## STYLE 90 QUIKFLANGE™

QUIKFLANGE™ two-piece hinged casing groove-to-flange adaptor is designed for direct connection of ANSI class 125,150 and ISO 7005-1 class PN10/16 standards flanged components into a grooved pipe system.

The hole-spacing is standard and enable standard flanged items to be easily and rapidly assembled to the grooved pipe. The hinged halves are drawn together into the pipe end-groove with a built-in arrangement especially required when the pipe end is out-of-round.

The unique design of the gasket inserted into the QUIKFLANGE™ ensures a closed seal between the pipe and the mating flange face.

QUIKFLANGE™ provides a rigid joint when all bolts have been tightened.

For special applications where the mating flange faces are not hard and smooth, use metal flange "washer plates". Please contact the factory for details.

Maximum working pressure: Acc. to standard  
For fire protection equipment and approved pressure ratings please contact Modgal.

Nominal Size (Inches / DN)	Pipe Outside Diameter	Flange Dimensions			Sealing surface		Standard			Bolts		Weight Lbs	Approvals
		A	B	C	X (max.)	Y (min.)	ISO 7005-2	BSTD	ANSI	Qty.	Size		
2" / 50	2,375	6.50	4.92	0.79	2.36	3.39	PN10 / PN16	-	-	4	M16	3.88	FM / UL / VDS
2" / 50	2,375	6.02	4.74	0.91	2.36	3.39	-	-	ASA150	4	¾"	3.31	FM / UL
2½" / 65	2,875	7.01	5.50	0.75	2.99	4.02	-	-	ASA150	4	¾"	3.31	FM / UL
3" OD	3,000	7.28	5.71	0.87	2.99	4.02	PN10 / PN16	-	-	4	M16	5.29	FM / UL / VDS
3" / 80	3,500	7.40	5.75	0.79	3.50	4.53	-	16 Bar	-	4	¾"	4.41	FM / UL
3" / 80	3,500	7.50	6.00	0.94	3.50	4.53	-	-	ASA150	4	¾"	5.64	FM / UL
3" / 80	3,500	7.87	6.30	0.79	3.50	4.53	PN10 / PN16	-	-	8	M16	5.84	FM / UL / VDS
4" / 100	4,500	9.02	7.50	0.94	4.49	5.55	-	-	ASA150	8	¾"	7.72	FM / UL
4" / 100	4,500	8.66	7.09	0.87	4.49	5.55	PN10 / PN16	-	-	8	M16	6.57	FM / UL / VDS
5" OD	5,500	9.92	8.27	0.94	5.51	6.69	PN10 / PN16	-	-	8	M16	9.17	VDS
5" / 125	-	-	-	-	-	-	-	-	-	-	-	-	-
6" / 150	6,625	11.14	9.45	1.00	6.61	7.80	PN10 / PN16	-	-	8	M20	11.22	FM / UL / VDS
6" / 150	6,625	11.14	9.45	1.00	6.61	7.80	-	-	ASA150	8	¾"	11.22	FM / UL
8" / 200	8,625	13.46	11.75	1.18	8.62	9.92	-	-	ASA150	8	¾"	16.96	FM / UL
8" / 200	8,625	13.50	11.61	1.10	8.62	9.92	PN16	-	-	12	M20	17.64	FM / UL / VDS