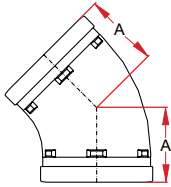


# FITTINGS / Style 64 - 65 - 66 SHORT RADIUS

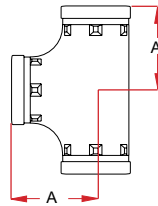
## GROOVED-END FITTINGS

Maximum working pressure: 500 psi  
For fire protection equipment and approved pressure ratings please contact Modgal.

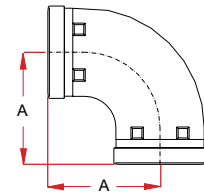
**STYLE 64**  
Elbow 45°



**STYLE 65**  
Equal Tee



**STYLE 66**  
Elbow 90°



Nominal Size (Inches / DN)	Pipe Outside Diameter	Dimen- sion	Weight Lbs	Approvals
		A		
1" / 25	1.315	-	-	-
1¼" / 32	1.660	1.75	0.66	FM / UL LPCB / VDS
1½" / 40	1.900	1.75	0.79	FM / UL LPCB / VDS
2" / 50	2.375	2.01	1.12	FM / UL LPCB / VDS
2½" / 65	2.875	2.24	1.81	FM / UL LPCB
3" OD	3,000	2.24	1.90	FM / UL LPCB / VDS
3" / 80	3.500	2.50	2.56	FM / UL LPCB / VDS
4" / 100	4.500	2.99	3.64	FM / UL LPCB / VDS
5"OD	5,500	2.99	4.08	FM / UL LPCB / VDS
5" / 125	5.563	3.24	6.88	FM / UL LPCB
6" / 150	6.625	3.50	8.60	FM / UL LPCB / VDS
8" / 200	8.625	4.25	16.76	FM / UL VDS
10" / 250	10.750	4.72	36.71	FM / UL VDS
12" / 300	12.750	5.24	51.82	FM / UL VDS

Nominal Size (Inches / DN)	Pipe Outside Diameter	Dimen- sion	Weight Lbs	Approvals
		A		
1" / 25	1.315	2.28	0.79	LPCB / VDS
1¼" / 32	1.660	2.76	1.46	FM / LPCB VDS
1½" / 40	1.900	2.76	1.65	FM / LPCB VDS
2" / 50	2.375	2.76	1.98	FM / UL LPCB / VDS
2½" / 65	2.875	3.03	3.09	FM / UL LPCB
3" OD	3,000	2.99	2.98	FM / UL LPCB / VDS
3" / 80	3.500	3.37	3.97	FM / UL LPCB / VDS
4" / 100	4.500	3.98	5.95	FM / UL LPCB / VDS
5"OD	5,500	3.98	5.84	FM / UL LPCB / VDS
5" / 125	5.563	4.88	11.03	FM / UL LPCB
6" / 150	6.625	5.51	16.01	FM / UL LPCB / VDS
8" / 200	8.625	6.85	30.05	FM / UL LPCB / VDS
10" / 250	10.750	-	-	-
12" / 300	12.750	-	-	-

Nominal Size (Inches / DN)	Pipe Outside Diameter	Dimen- sion	Weight Lbs	Approvals
		A		
1" / 25	1.315	2.28	0.56	LPCB / VDS
1¼" / 32	1.660	2.76	0.92	FM / LPCB VDS
1½" / 40	1.900	2.76	1.12	FM / LPCB VDS
2" / 50	2.375	2.76	1.29	FM / UL LPCB / VDS
2½" / 65	2.875	3.03	1.98	FM / UL LPCB
3" OD	3,000	2.99	2.01	FM / UL LPCB / VDS
3" / 80	3.500	3.37	2.76	FM / UL LPCB / VDS
4" / 100	4.500	3.98	5.73	FM / UL LPCB / VDS
5"OD	5,500	3.98	4.81	FM / UL LPCB / VDS
5" / 125	5.563	4.88	8.82	FM / UL LPCB
6" / 150	6.625	5.51	11.30	FM / UL LPCB / VDS
8" / 200	8.625	6.85	18.31	FM / UL LPCB / VDS
10" / 250	10.750	-	-	-
12" / 300	12.750	-	-	-

For use with higher than stated maximum working pressure, please contact Modgal Metal.