

# FITTINGS / Style 42 - 91

## GROOVED-END FITTINGS

Maximum working pressure: 500 psi  
For fire protection equipment and approved pressure ratings please contact Modgal.

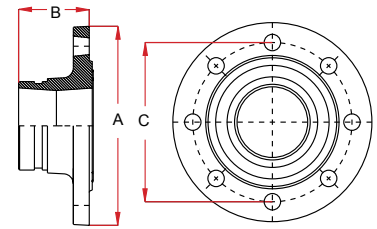
### STYLE 42

Elbow 22½°



### STYLE 91

Grooved Flange Adaptor



Nominal Size (Inches / DN)	Pipe Outside Diameter	Dimen- sion	Weight Lbs	Approvals
		A		
1¼" / 32	1.660	1.77	0.66	-
1½" / 40	1.900	1.77	0.75	FM
2" / 50	2.375	1.89	1.17	FM
2½" / 65	2.875	2.01	1.83	FM
3" OD	3.000	2.01	1.83	FM
3" / 80	3.500	2.24	2.43	FM
4" / 100	4.500	2.87	4.19	FM
5" OD	5.500	3.11	6.17	FM
5" / 125	5.563	2.87	6.17	FM
6" / 150	6.625	3.11	10.45	FM
8" / 200	8.625	3.86	16.32	FM

Nominal Size (Inches / DN)	Pipe Outside Diameter	Dimensions			Standards		Bolts		Weight Lbs	Approvals
		A	B	C	ISO 7005-2	ANSI	Qty.	Size		
2" / 50	2.375	6.50	2.56	4.75	PN10 PN16	-	4	M16	3.31	FM / UL / VDS
2½" / 65	2.875	7.28	2.44	5.50	-	ASA 150	4	5/8"	4.08	UL
3" OD	3.000	7.28	2.56	5.50	PN10 PN16	-	4	M16	3.35	FM / UL / VDS
3" / 80	3.500	7.87	2.56	6.00	PN10 PN16	-	8	M16	8.33	FM / UL / VDS
3" / 80	3.500	7.56	2.80	6.00	-	ASA 150	4	5/8"	8.29	FM / UL
4" / 100	4.500	9.02	3.90	7.50	-	ASA 150	8	5/8"	14.55	FM / UL
4" / 100	4.500	9.01	2.76	7.50	PN10 PN16	-	8	M16	12.57	FM / UL / VDS
5" OD	5.500	9.84	2.76	8.50	PN10 PN16	-	8	M16	12.57	FM / UL / VDS
5" / 125	5.563	9.84	2.76	8.50	-	ASA 150	8	M16	12.57	-
6" / 150	6.625	11.18	2.68	9.45	-	ASA 150	8	¾"	22.27	FM / UL
6" / 150	6.625	11.10	2.76	9.50	PN10 PN16	-	8	M20	22.27	FM / UL / VDS
8" / 200	8.625	13.39	3.15	11.75	PN16	-	12	M20	38.80	FM / UL / VDS
8" / 200	8.625	13.50	4.27	11.61	-	ASA 150	8	¾"	26.68	FM / UL

For use with higher than stated maximum working pressure, please contact Modgal Metal.