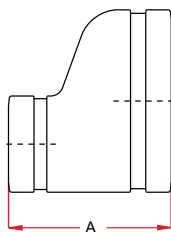


REDUCING FITTINGS / Style 16 - 55

STYLE 16

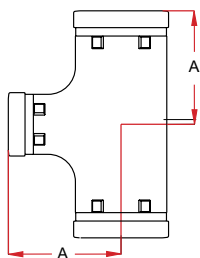


ECCENTRIC REDUCER

Maximum working pressure: 500 psi
For fire protection equipment and approved pressure ratings please contact Modgal.

Nominal Size (Inches / DN)	Pipe Outside Diameter	Coupling Dimensions	Weight Lbs	Approvals
		A		
3" x 2" / 80 x 50	3.500 x 2.375	3.54	1.76	-
4" x 2" / 100 x 50	4.500 x 2.375	4.13	2.98	-
4" x 3" / 100 x 80	4.500 x 3.500	4.02	3.09	-
6" x 3" / 150 x 80	6.625 x 3.500	5.63	7.28	-
6" x 4" / 150 x 100	6.625 x 4.500	5.55	6.17	-

STYLE 55



REDUCING TEE

Maximum working pressure: 500 psi
For fire protection equipment and approved pressure ratings please contact Modgal.

Nominal Size (Inches / DN)	Pipe Outside Diameter	Coupling Dimensions	Weight Lbs	Approvals
		A		
2½" x 1½" / 65 x 40	2,875 x 1,900	2.99	2.65	-
2½" x 2" / 65 x 50	2.875 x 2.375	2.99	2.65	FM / UL*
3" OD x 2"	3,000 x 2,375	2.99	2.65	FM / UL
3" x 2" / 80 x 50	3.500 x 2.375	3.35	3.97	FM / UL*
3" x 3" OD	3,500 x 3,000	3.35	4.19	FM / UL
4" x 2" / 100 x 50	4.500 x 2.375	3.78	6.06	FM / UL*
4" x 3" OD	4,500 x 3,000	3.98	6.62	FM / UL
4" x 3" / 100 x 80	4.500 x 3.500	3.98	6.62	FM / UL*
5" OD x 3 OD	5,500 x 3,000	4.88	10.36	FM / UL
5" OD x 3"	5.500 x 3.500	3.98	10.58	FM / UL
5" OD x 4"	5.500 x 4.500	4.84	11.24	FM / UL
5" x 3 OD	5.563 x 3,000	4.88	10.36	FM / UL
5" x 2½" / 125 x 65	5.563 x 2,875	4.88	10.36	In progress
5" x 3" / 125 x 80	5.563 x 3,500	4.88	10.58	In progress
5" x 4" / 125 x 100	5.563 x 4.500	4.88	11.02	In progress
6" x 2" / 150 x 50	6.625 x 2.375	6.61	24.26	FM / UL
6" x 3" OD	6.625 x 3,000	5.47	15.88	FM / UL
6" x 3" / 150 x 80	6.625 x 3.500	5.47	14.33	FM / UL
6" x 4" / 150 x 100	6.625 x 4.500	5.47	15.44	FM / UL
8" x 3" / 200 x 80	8,625 x 3,500	6.89	28.67	FM / UL
8" x 4" / 200 x 100	8,625 x 4,500	6.89	28.22	FM / UL
8" x 5" OD	8,625 x 5,500	6.89	27.65	FM / UL
8" x 6" / 200 x 150	8,625 x 6,625	6.89	29.11	FM / UL
10" x 6" / 250 x 150	10,750 x 6,625	9.02	65.93	-
10" x 8" / 250 x 200	10,750 x 8,625	9.02	66.15	-
12" x 10" / 300 x 250	12,750 x 10,750	10.00	112.46	-