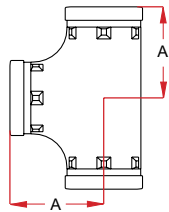


FITTINGS / Style 05 - 06 LONG RADIUS

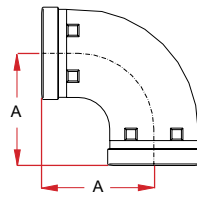
GROOVED-END FITTINGS

Maximum working pressure: 500 psi
For fire protection equipment and approved pressure ratings please contact Modgal.

STYLE 05 Equal Tee



STYLE 06 Elbow 90°



Nominal Size (Inches / DN)	Pipe Outside Diameter	Dimen- sion		Weight Lbs	Approvals
		A			
1" / 25	1.315	-	-	-	-
1¼" / 32	1.660	-	-	-	-
1½" / 40	1.900	-	-	-	-
2" / 50	2.375	3.25	2.15	FM / UL LPCB / VDS	
2½" / 65	2.875	3.74	3.75	FM / UL LPCB / VDS	
3" OD	3,000	3.74	3.99	FM / UL LPCB / VDS	
3" / 80	3.500	4.25	5.42	FM / UL LPCB	
4" / 100	4.500	5.00	8.38	FM / UL LPCB / VDS	
5"OD	5,500	5.00	8.82	FM / UL LPCB / VDS	
5" / 125	5.563	5.51	14.62	FM / UL LPCB	
6" / 150	6.625	6.50	20.18	FM / UL LPCB / VDS	
8" / 200	8.625	7.72	36.71	FM / UL LPCB / VDS	
10" / 250	10.750	9.02	79.82	FM / UL VDS	
12" / 300	12.750	10.00	110.69	UL	
14" / 350	14,000	11.10	140.02	-	
16" / 400	16,000	12.01	233.73	-	

Nominal Size (Inches / DN)	Pipe Outside Diameter	Dimen- sion		Weight Lbs	Approvals
		A			
1" / 25	1.315	-	-	-	-
1¼" / 32	1.660	-	-	-	-
1½" / 40	1.900	-	-	-	-
2" / 50	2.375	3.25	1.57	FM / UL LPCB / VDS	
2½" / 65	2.875	3.74	2.60	FM / UL LPCB / VDS	
3" OD	3,000	3.74	3.00	FM / UL LPCB	
3" / 80	3.500	4.25	3.75	FM / UL LPCB / VDS	
4" / 100	4.500	5.00	5.73	FM / UL LPCB / VDS	
5"OD	5,500	5.00	5.95	FM / UL LPCB / VDS	
5" / 125	5.563	5.51	9.48	FM / UL LPCB	
6" / 150	6.625	6.50	12.83	FM / UL LPCB / VDS	
8" / 200	8.625	7.72	23.37	FM / UL LPCB / VDS	
10" / 250	10.750	9.02	58.65	FM / UL VDS	
12" / 300	12.750	10.00	81.59	UL	
14" / 350	14,000	11.10	100.33	-	
16" / 400	16,000	12.01	176.40	-	

For use with higher than stated maximum working pressure, please contact Modgal Metal.